



19 Jane Street West Croydon

Ph: 83454138

Website: www.kilkennyc7@sa.edu.au

Instagram: @kilkennyps

WELCOME TO

KILKENNY PRIMARY SCHOOL
Challenging Powerful Learners.

PARENT INFORMATION



WELCOME

Dear parents and caregivers,

It is my pleasure to welcome all new families to Kilkenny Primary School. I trust that the time you and your families spend here will be enjoyable and rewarding.

Our vision is to ensure our teaching and learning programs prepare all students with the skills, knowledge and capabilities to thrive and prosper in a world that is constantly changing. At Kilkenny Primary School we promote and infuse the skills of problem solving, innovation, creativity, critical thinking, collaboration, imagination and inquiry into learning.

Your child will be supported in an inclusive learning community where diversity, belonging, care and respect is celebrated and valued.

We look forward to working with you as a partner in your child's education and welcome your participation in the life of the school.

This handbook is designed to help you and your family in your transition to our school.

We welcome you to our community.

Alex Narcys

Principal



HISTORY

Official records show that Kilkenny School was opened on September 30th 1889. The first Head Teacher was Mr. Frederick William Gee. At this time the wheat fields were diminishing with new housing and industry assuming a greater presence.

In 1975 land adjoining the school was purchased, a new replacement school built and the old buildings, which had served for 86 years, were demolished. Of the early days of the school, little is known for records were not kept until the 1900's. In fact 1911 provides us with our first comprehensive look at the school's history. The passing years witnessed many changes both within the community and the curriculum offerings.

From a rural region with a scattered population of mainly Irish settlers, our district has evolved into one, which reflects Australia's diversity of cultures. Language programmes in Greek, Italian and Serbo-Croatian were introduced in the early 70's - the forerunners of the state's current Languages Other Than English programmes.

In 1978 the school acquired that section of land we affectionately refer to as 'the Scrub', making the school site 3 times the size of the original site.

Kilkenny has always maintained a community focus - in fact several of our present day students are third generation school members. This is indicative of the value the community places in our school as a provider of quality education programmes for its children.



TERM DATES

	2024	2025
Term 1	29th January - 12th April	28th January - 11th April
Term 2	29th April - 5th July	28th April - 4th July
Term 3	22nd July - 27th September	21st July - 26th September
Term 4	14th October - 13th December	13th October - 12th December

SCHOOL TIMES

LESSON	TIME
PLAYGROUND SUPERVISION	8:30-8:45
START OF SCHOOL DAY	8:45
LESSON 1	8:55 - 9:45
LESSON 2	9:45 - 10:35
RECESS	10:35 - 11:05
LESSON 3	11:05 - 11:55
LESSON 4	11:55 - 12:45
LUNCH EATING TIME	12:45 - 12:55
LUNCH	12:55 - 1:25
LESSON 5	1:25 - 2:15
LESSON 6	2:15 - 3:05

CURRICULUM

READ, WRITE INC.

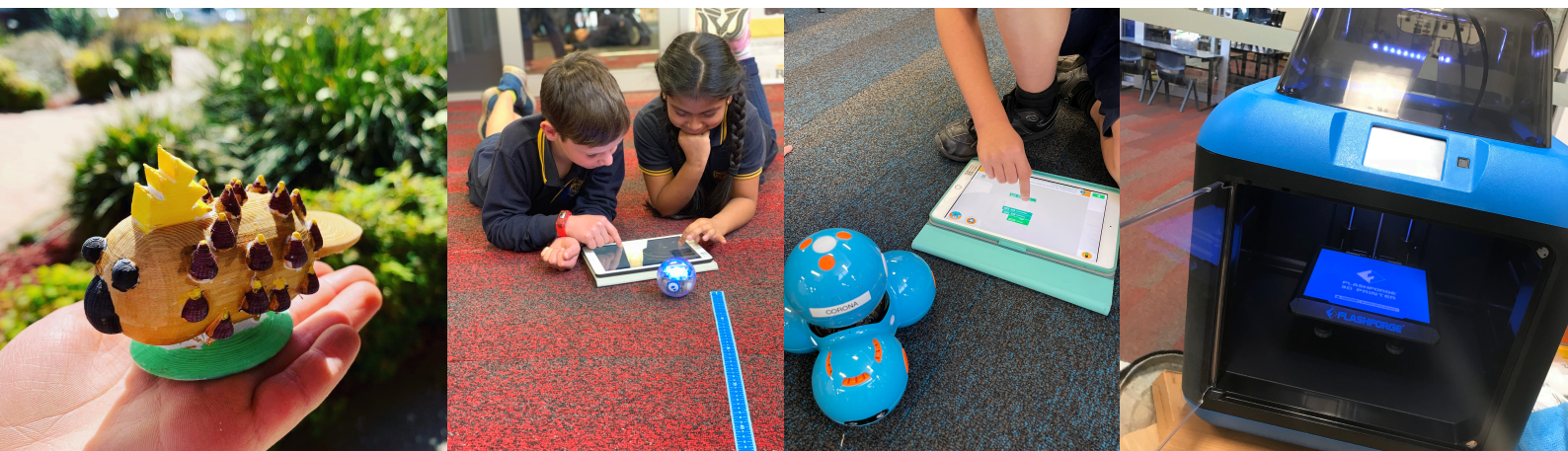
The Read Write Inc. program is a comprehensive, evidence based, literacy initiative designed to support children in developing strong reading and writing skills. It follows a systematic and structured approach, teaching children phonics, comprehension, fluency, and writing through a series of engaging activities. The program focuses on breaking down language into its fundamental sounds and patterns, helping children grasp the foundations of reading and spelling. With its interactive and multi-sensory techniques, Read Write Inc. caters to different learning styles, ensuring that each child receives targeted support to enhance their literacy abilities. By using phonics as a cornerstone, this program equips children with the tools to decode words, comprehend texts, and express themselves confidently in writing, fostering a solid foundation for lifelong literacy success.

SPECIALIST SUBJECTS

Our Specialist Subjects at Kilkenny Primary School are;
Indonesian, Dance and Drama, Physical Education and Science.

TECHNOLOGY

At Kilkenny Primary we have a wide variety of devices and equipment to ensure students have opportunities to build skills in using, creating, coding, and problem-solving. These include laptops, iPads, Bee-Bots, Dash-Bots, Spheros, Virtual Reality, and 3D Printers. Students develop IT user agreements each year and must adhere to these to continue use. All students complete online safety courses to ensure they understand and develop responsible online skills and behaviours.



POWERFUL LEARNERS

Powerful learning encompasses an educational approach that goes beyond rote memorisation and standardised testing, aiming to cultivate a deeper, enduring understanding in students. It involves fostering critical thinking, creativity, problem-solving, and collaboration skills, enabling children to engage actively in their learning journey. Through powerful learning, children aren't just absorbing information; they're encouraged to explore, question, and apply knowledge in meaningful contexts. Kilkenny Primary values personalised learning experiences tailored to student's interests and strengths, nurturing a passion for lifelong learning. We acknowledge that learning isn't confined to textbooks but is a dynamic, interconnected process that extends beyond the classroom, empowering children to become adaptable, innovative, and self-directed learners. To support our focus on Powerful Learning, our school has developed a whole-school pedagogical agreement outlining 6 key research evidenced practices that have high impacts on student learning outcomes. A copy of this is available on our school website.

MATHS MINDSET

A positive maths mindset is crucial in shaping how children approach and engage with mathematics. It's more than just getting the right answers; it's about fostering a belief in one's ability to learn and solve problems. Encouraging a positive attitude towards maths helps children embrace challenges, persist through difficulties, and develop resilience when faced with complex problems. When kids believe in their capability to understand math concepts, they become

more willing to explore, ask questions, and experiment with different strategies. This mindset shift can transform maths from a daunting subject into an exciting puzzle to solve, promoting a sense of curiosity and a willingness to tackle new mathematical challenges with confidence. Moreover, a positive maths mindset not only impacts academic success but also nurtures valuable life skills such as critical thinking, logical reasoning, and problem-solving, preparing children for success in various aspects of their future endeavours. At the beginning of every year, classes develop their own Maths Norms around this mindset work.



REPORTING

To report on student achievement, we provide the following reporting timeline:

- Term 1: Parent/Teacher Interviews (approx. Week 9/10)
- Term 2: Written Report (A-E grade - goes home on the last day of term)
- Term 3: Student Showcase (student-led)
- Term 4: Written Report (A-E grade - goes home on the last day of term)

#THEKILKENNYWAY

At Kilkenny Primary School, we are particularly proud of the following initiatives, programs and events.

KITCHEN / GARDEN PROGRAM

Kilkenny Primary is a Stephanie Alexander school and is proud to be associated with this wonderful organisation. The aim of the Kitchen Garden Program is pleasurable food education for young children. The underlying belief is that by introducing this holistic approach we have a chance to positively influence children's food choices in ways that have not been tried before.

Our Garden Program has been created to provide edible, aromatic and beautiful resources for a kitchen. The creation and care of the Kitchen Garden teaches children about the natural world, about its beauty and how to care for it, how best to use the resources we have, and an appreciation for how easy it is to bring joy and wellbeing into one's life through growing, harvesting, preparing and sharing fresh, seasonal produce.

Classes engage with a kitchen and garden specialist on a weekly basis which enables them to be immersed in the kitchen garden program. Students prepare and cook food in small groups, as well as set the tables, sit-down and enjoy the meal together before pitching in to do the dishes and clean the kitchens! We do rely on parent volunteers to assist us and help these lessons run smoothly, especially in the kitchen - so if you can volunteer, please see the front office for more information!



SCRUB NATURE PLAY

Students at Kilkenny Primary enjoy the "scrub" area during both lesson and play times. This area includes natural playgrounds, a pond, and plenty of trees to climb, cubbies to build and loose parts to play with.

WELLBEING INITIATIVES/PROGRAMS

CARING AGREEMENTS

Our school Caring Agreements were developed in 2013 and operate as our school values. Since then, student's have collaborated to create a charter on how these agreements help them to be powerful learners, as well as designing 'mascots' for these Caring Agreements. These are taught at the beginning of each year, referred to throughout the school day, and celebrated at whole-school assemblies.



"Squirt"
**APPRECIATIONS - NO
PUT DOWNS**



"Perez"
MUTUAL RESPECT



"Eddie"
ATTENTIVE LISTENING



"Pippa"
PARTICIPATION



"Dave"
**ONLY OUR BEST
WILL DO**

BREAKFAST CLUB

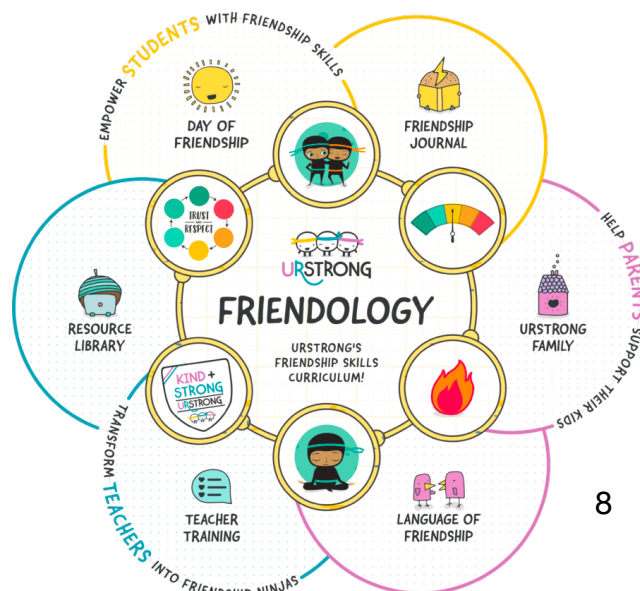
Breakfast club runs every Monday and Friday mornings out of the STEM room, and is supported by KickStart 4 Kids.

WHAT'S THE BUZZ?

This social skills program is run each year in small groups made up of students who have been identified by teacher, or via parent request. The program aims to immerse younger students in a variety of essential interpersonal skills, stimulated by the experiences of a character called Archie. In each lesson, the children help Archie solve the very same social dilemmas that occur in their everyday lives. As they do this, through activity, discussion, role-play, games, puzzles and quizzes, they learn how to express feelings and become a more positive problem solver.

FRIENDOLOGY 101

This proactive, whole-school approach aims to empower students with friendship skills. Concepts, skills and language are taught to help them build and maintain healthy friendships. A range of resources are used when assisting students through conflict resolution. Parents can enjoy a free family membership at urstrong.com



OUT-OF-SCHOOL SPORTS

In addition to our Physical Education program, our PE specialist teacher, Mr James organises a range of sporting opportunities for our students. Both afterschool and weekend competitions, these include:

Basketball (Reception-Year 6) - All Year

Soccer (Reception-Year 6) - Term 2 & 3

Netball (Year 2-Year 6) - All Year

Cricket (Year 2-Year 6) - Terms 1 & 4

Volleyball (Year 4-Year 6) - All Year

SAPSASA

Keep an eye out for information from Mr James on Class Dojo if your child is interested. This will include information regarding days of the week and times.

COMMUNITY EVENTS / FUNDRAISING

Each year we have events to come together as a community, both during school hours as well as some special events out of hours. These include,

- Community breakfasts at the beginning of each term
- Harmony Day - celebrating cultural diversity - nicknamed KWOMAD (Kilkenny World of Music and Dance)
- Sports Day, Big Freeze, Book Week Parade, Footy Colours Day, End-of-Year Concert.
- Quiz Night (run by our fabulous parent fundraising committee)



STUDENT VOICE

Our “Change Makers” are elected from each class and work together with Leadership to drive improvement projects. At the beginning of the year, House Captains are also elected from our Year 6 cohort to represent our 4 house teams (Banksia - Green, Wattle - Yellow, Jacaranda - Blue, Waratah - Red).

Students are at the centre of all we do here at KPS. Because of this, we are continually developing them to be agents of their own learning, and building their sense of belonging and inclusion within their school and wider community. Building this agency in students will help them to be successful lifelong learners and citizens in our ever-changing society.

Leadership opportunities include roles as;

- House Captains - leading out sports day teams and other whole school events.
- Student forums - such as our ChangeMaker Team who seek out feedback and ideas for school improvement.
- Green Team - support grounds and garden development

All students have the potential to lead, share their voices, and build agency. As a school we continually explore ways to ensure our students are working with us “shoulder to shoulder” to support learning and wellbeing improvement.



GENERAL INFO

Early Dismissal

The school dismisses at 3:05pm each day except on the last day of each term when children are dismissed at 2:05pm.

Absences

If your child is absent from school for any reason, please notify the school by phone (83454138) or send an SMS to 0429 371 086

Late Students

All students arriving after 8:55am need to report to front office and sign-in late. A slip will be printed for the student to take to class teacher.

Student Departures

If, for any reason, a student is collected during the course of the school day, the responsible adult is required to sign-out their child at the Front Office and collect a slip to give to the teacher before collecting the child.

OSHC

BEFORE SCHOOL CARE

Kilkenny Before School Care hours of operation are from 7am-8:30am Monday to Friday (excluding public holidays).

AFTER SCHOOL CARE

Kilkenny After School Care hours of operation are from 3:05pm to 6pm Monday to Friday. On the last day of each term, we offer a 2:05-6pm afternoon session.

VACATION CARE

Vacation Care is offered in the school holidays. See OSHC staff for information and programs.

Volunteers

Parents and community members can be involved in school life in a variety of ways. We encourage all parents to be active in some way, for we strongly promote and demonstrate our belief that student learning is enhanced through a partnership between parents and teachers.

If you are interested in volunteering, please contact the front office for information and forms. To volunteer, you will need a current working with children's check.



Canteen

The school canteen is able to provide recess and lunch for children on Tuesdays, Wednesdays and Thursdays. Each class has a lunch order basket. Price lists are provided on our website. Canteen orders are preferred through our QKR app. See front office for app details.

Medication

Teaching staff are not permitted to administer any form of medication to students. If your doctor has prescribed medication for a student to be taken during school hours, such medication can be delivered to the front office with;

- Medication box with pharmacy label showing student's name and dosage and time details.
- Doctor's letter / Health Care Plan
- Agreement forms to be filled out (available from front office)



Assemblies

Whole school assemblies occur on Friday at 9am in Weeks 3, 6 and 9 each term. Class groups take turns organising and presenting at each assembly and families are most welcome to attend. Assemblies are great celebrations where we acknowledge our school caring agreements.

End of term assemblies are at 1:30pm.

Newsletters

Our school newsletter is distributed in Weeks 4 and 8 of each term via Class Dojo and our website.

Parking

Parents are not to use the school carpark as a drop off or collection zone. This area is for staff only. Please respect parking signs/speed limits.

Sun Smart

As part of our sun smart policy, students are required to wear broad brimmed or bucket hats from **1st August- 30th April** each year. This includes a 'no hat, no play' policy for recess and lunch during these dates.

Inclement Weather

We do not dismiss early at times of hot weather as the school is air conditioned. In the event of extreme weather conditions, steady rain, heat waves etc. children will be supervised undercover or indoors by teachers during play breaks.

Smoking

In line with Government legislation, our school is a smoke-free area 24hrs a day. Parents and visitors are asked to abide by this law and refrain from smoking on school grounds at any time.

Bicycles/Scooters/Skateboards

A bicycle rack is provided near the main oval. No responsibility is accepted for loss of bicycles or parts whilst they are left in the area. It is the responsibility of students and/or their carers to ensure equipment is locked. Students must walk their bicycles etc in the school yard.

Mobile Phones

Mobiles should not be brought to school. If your child does have a mobile, these must be given to the

teacher at the beginning of the day and will be kept in a lock box for the duration of the school day, as per our school policy available on our website.

Emergencies

If children become ill or injured in the school yard, parents or emergency contacts will be phoned by the school to advise parent/caregiver and/or arrange for the child to be collected from school. Please make sure that the front office has your current phone numbers and those of your emergency contacts.

School Fees

The Governing Council establishes Material and Services (M&S) Charge each year. The Material and Services Charge are used, along with funding from the Department of Education to cover the cost of curriculum initiatives including the purchase of stationery, art materials and classroom resources. Fundraising also enables us to undertake major projects and grounds development. The charges do not cover the cost of excursions, swimming or camps.

Payments

M&S Charges are sent to parents at the start of each year. Payment can be made in person at the front office or online via our QKR app.

School Card

Some families may be eligible for financial assistance in the form of School Card. Forms are available online at www.sa.gov.au (school card scheme).

Preschool Fees

A preschool fee is charged at the beginning of each term and payable within 2 weeks.

Dress Code

Students attending Kilkenny Primary School are required to wear school uniform. School uniform can be purchased online via QKR and collected the next day at the front office. Alternatively, you can purchase from the front office between 8:30-10am each week day. Logos and brand names are not acceptable. It is expected that school clothing is sun-smart and navy blue. Uniform price lists are available from the front office.

Shoes should be appropriate for involvement in physical activity. Closed in shoes are preferred. Slip-on shoes, thongs, heels are not to be worn at school. Students and adults in Kitchen lessons are to wear closed in shoes.

Cosmetics may not be worn why students at school, including nail-polish. Body piercings, earrings and chains are not to be worn (sleepers and studs are acceptable).

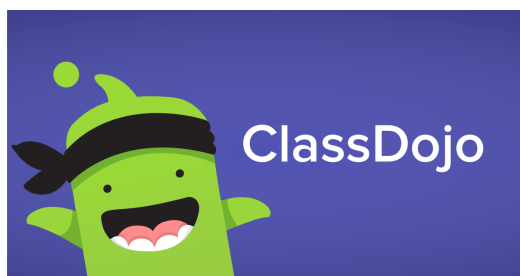


Home/School Communication

Adequate and effective communication between the home and the school is a vital factor in your child's education. Information is sent home on a regular basis via Class Dojo - you will get an invite early in the term to download the app and connect to your child's class. Please read any information on Class or School Story carefully so that you are aware of what is happening in your child's school life.

Equally, it is important that teachers are aware of any circumstances outside of school which may affect a student's health, wellbeing or learning at school. Please contact your child's teacher via Class Dojo or arrange a time to meet with them to exchange any relevant information.

Any concerns or queries which you may have should be directed to the person who can best help you. In most cases, this will be the class teacher.



Outside Service Providers/Therapy

Some on-site therapy can occur through approved permission by the principal. See the front-office for more information.

Term Calendars and Events

Each Term we have a whole-school calendar that is distributed on Class Dojo. This has all important events and dates outlined so that families are aware of when special events and celebrations are happening in advance. "Events" are also created on ClassDojo so that you get details and reminders of up coming events.

Camps and Excursions

Classes going on camps and excursions will be notified on Class Dojo with a letter outlining activities, location, times and cost involved. Consent forms will either be in the form of an email to be returned online or hard copy to be returned to classroom teacher. All money gets paid to the front office or via the Qkr app.

Intensive English Language Centre

The Intensive English Learning Centre (IELC) provides intensive English language support for students who have newly arrived in Australia, with a language and cultural background other than English.

Students who have been in Australia for less than 12 months (18 months for students in Reception and year one) are eligible to enrol in the Intensive English Learning Centre.

Students generally stay in the IELC for twelve months. After completion, students are supported to successfully continue their education at their local school.